

# SURGICAL GOWNS CATALOGUE



**SWASTIMED**  
**INDUSTRIES**

Maximum Protection and Infection Control

[www.swastimed.com](http://www.swastimed.com)

# Surgical Gowns

## Medical Procedure Gown



- AAMI Level 1 Surgical Gown for protection in low or minimal risk conditions
- Compliant with ANSI/AAMI PB70 Level 1 standards
- Material – Non-woven spun-bond PP + PE coated (40 GSM)
- Durable PE coated spun-bond fabric for low to moderate conditions
- Hook and loop lock or Neck-tie fastening behind the neck
- Elastic wrist or Thumb loop
- Full back cover for assured protection
- Colors – Medical Blue, Yellow or White
- Sizes – M, L, XL and XXL sizes

## Surgical Gown



- AAMI Level 2 Surgical Gown for protection in minimal or moderate risk conditions
- Compliant with ANSI/AAMI PB70 Level 2 standards
- Material – SSMMS Fabric (35 GSM)
- Strong and durable SMS Fabric for demanding conditions
- Sonic Welded Sleeves
- Hook and loop lock or Neck-tie fastening behind the neck
- Elastic wrist or Thumb loop or Raglan cuffs
- Full back cover for assured protection
- Colors – Medical Blue
- Sizes – M, L, XL and XXL sizes

## Donning and Doffing Procedure

### Donning Instructions

- Fully cover torso from neck to knees, arms to end of wrists, and wrap around
- Fasten the gown at the back of the neck and at waist with tie tags

### Doffing and Disposing Instructions

- Wash your hands/use an alcohol-based hand sanitizer immediately post usage
- Unfasten gown ties, taking care that the sleeves do not come in direct contact with your body
- Pull gown away from neck and shoulders touching the inside of the gown only as the front and sleeves of the gown are contaminated once worn
- Turn gown inside out, fold or roll into a bundle and discard in a waste container
- Wash your hands or use an alcohol-based hand sanitizer immediately after disposing the gown

# Reinforced Surgical Gowns

## Surgical Wraparound Gown (R/NR)



- AAMI Level 3 Surgical Gown for protection in moderate or high-level barrier protection conditions
- Compliant with ANSI/AAMI PB70 Level 3 standards
- Material – SSMMS Fabric (45 GSM)
- Double multi-layer SMS material for demanding conditions
- Sonic welded sleeves
- Hook and loop lock or Neck-tie fastening behind the neck
- Full sleeve with knitted fabric wrist cuffs
- Overlapping back – Full back cover
- Colors – Medical Blue
- Sizes – M, L, XL and XXL sizes

## Viral Barrier / Isolation Gown



- AAMI Level 4 Viral Barrier Gown for protection in high-risk conditions
- Compliant with ANSI/AAMI PB70 Level 4 standards
- Material – SSMMS with laminate reinforcement in critical areas for assured safety (60 GSM)
- Sonic welded sleeves
- Hook and loop lock or Neck-tie fastening behind the neck
- Full sleeve with knitted fabric wrist cuffs
- Overlapping back – Full back cover
- Colors – Medical Blue
- Sizes – M, L, XL and XXL sizes

## Surgeon Gowns

All our Surgeon Gowns are designed and manufactured with the highest level of quality and safety standards to protect the user from transfer of micro-organisms and bodily fluids while performing their duties. Different gowns come with varying levels of protection, and are fluid repellent, anti-static treated, anti-toxic, lint free and puncture/tear resistant. Our products are compliant with EN 13795 and ANSI/AAMI PB70 standard specifics.

## About Us

SwastiMed Industries is a comprehensive (OEM) manufacturer of quality disposable medical supplies serving a notable clientele across the globe, protecting millions of lives.

Our state-of-the-art manufacturing unit in Chennai is well-equipped to meet bespoke requirements while conforming to highest hygiene standards designed to comfort fit, be application specific and meet safety needs.



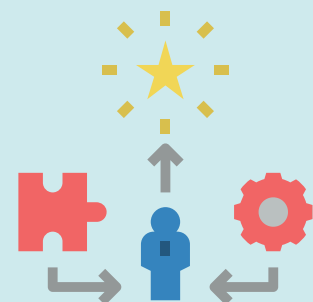
Acquired by 30k+ healthcare professionals everyday



Trusted application in 1 million+ surgeries



Protecting more than 50 million lives



Leveraging 50+ years of combined experience



**SWASTIMED**  
**INDUSTRIES**

Maximum Protection and Infection Control

99/9, Agaram Main Road, Paduvanchery, Madambakkam, Agaramthen,  
Chennai - 600 126

Timings: Mon - Sat | 8 AM - 6 PM

+91 96770 88865

info@swastimed.com

www.swastimed.com